



# WHAT LIES BENEATH

By opening up the space, this central London home's lovely ground floor is now a super-stylish kitchen-living-diner

Words: **Amelia Thorpe** Photography: **Nick Smith**



**Above:** The Fisher & Paykel CoolDrawer, integrated into the island, has five temperature settings – so it can change from freezer to fridge to pantry space as required.

**Left:** Every detail counts in this design – even the stairs are finished with Polished Gun Barrel metal strips, made by Andrew Nebbett Designs.



**F**reshly returned to the UK after a long stint of living in Switzerland, Jo Long was keen to stamp her own personality onto her newly purchased central London home. She enlisted interior designer Caz Myers to bring her vision to life. "It started off as a small project to decorate and furnish a few rooms," recalls Caz. "But then it gradually grew and grew, until it became a major refurbishment of all five floors."

Jo, a mum of four children aged six to 15, was keen to create a welcoming family home, filled with natural light and a sense of space. After researching and interviewing interior designers, Jo picked Caz to undertake the work. "It was an extremely collaborative project, and we hit it off instantly," says Caz. Chief amongst her challenges was the kitchen. She was to convert the rather cold and sterile design on the Georgian townhouse's lower ground floor into a more family-friendly space with a warm, inviting and relaxed feel. Here, Caz tells us how she did it...

#### How did you begin the kitchen project?

The starting point was to focus on the layout. Rather than use the more formal dining

room on the ground floor, Jo wanted to turn the lower ground floor into a relaxed entertaining area with dining table adjacent to the kitchen. So we opened up the space. We removed the double doors between the kitchen and the unused room beyond, and added new full-height glazed doors to lead directly on to the courtyard garden. Not only did this provide room to create distinct but linked areas for cooking, dining and comfortable seating, it also allowed much more natural light into the room.

#### What can you tell us about the design of the kitchen area?

The idea was to create a contemporary but classic look, combining traditionally crafted furniture with clean-lined design. As there are no windows it might have been tempting to choose a pale colour, but that would have just looked bland. Instead, the grey makes a much bolder statement – especially when combined with the steel range cooker and fridge-freezer. Plenty of lighting on different circuits ensures the room never feels dingy.

#### How did you choose the surfaces and finishing touches?

We wanted to put plenty of soul into the house through eclectic, specially chosen elements. The timber flooring contrasts with the cabinetry,

and we used the same wood for the wall above the sink run and shelves. Timber always adds warmth and its whitewashed colour adds an individual, slightly Nordic feel. The granite of the worktops and sink is another beautiful, natural material, its dark colour flecked with blue for subtle interest. Even the cupboard handles were specially chosen – their tarnished bronze finish is in keeping with the room's eclectic mood.

#### What was the concept for the dining area?

Exposed brick walls add textural interest and warmth. We used thin 'half-slip' reclaimed brick tiles to create the look without the bulk. To accentuate the desired authentic, worn look, banquette seating was upholstered in vintage-look leather, as were the dining chairs. The zinc-topped table was made bespoke for the room. Its metal frame complements the factory-style lights.

#### And the living area?

Again, we wanted this to have a relaxed feel, so we focussed on soft textures and comfortable seating. We used the same reclaimed brick tiles on the wall, creating an indoor-outdoor feel by the doors which open onto the courtyard – so the space flows almost seamlessly out to the garden. To complete the room, pops of bright orange colour add a touch of fun, and boost the room's welcoming feel. **[KBB]**



**Above:** Black dining furniture offers bold definition against the reclaimed brick wall.

**Right:** The large sink is made from the same granite as the worktops, while a mixer with articulated spout is ideal for filling pans or washing up large roasting dishes.

**Opposite page:** The island with barstools is the kitchen's hang-out area, so was deliberately kept free of a sink or hob.



# GET THE LOOK



**Left:** Normann Copenhagen Tap stool, £136, Black by Design. (01889 502716 or black-by-design.co.uk)

**Right:** Made For You Lantern pendant lights, from £113 each, Urban Cottage Industries. (020 7193 2119 or urbancottageindustries.com)



**Above:** Aster two-seater sofa, £1407, Content by Conran. (020 8150 8380 or contentbyterenceconran.com)



**Above:** ICBDF604CF range cooker, £23,400, Wolf. (0845 250 0010 or subzero-wolf.co.uk)



Large 7380 pendant light, from £335, Davey Lighting. (020 7351 2130 or davey-lighting.co.uk)



**Left:** Pot filler with crosshead handles in chrome, £492, Perrin & Rowe. (01708 526361 or perrinandrowe.co.uk)

**Below:** Trimaran stripe tangerine pouffe, £292, Dash & Albert Europe. (+34 91432208 or dashandalberteurope.com)



**Above:** Finished in tinted and polished plasters, the Coffee Bean coffee table is furnished with castors so it can easily be moved around to make room for the children to play. Bright pops of colour enliven the space's natural shades.



## Q&amp;A

## Interior designer Caz Myers says...

Which elements in this scheme took up the majority of the budget?

The appliances are luxury-level, large models by Sub-Zero and Wolf. They formed a significant part of the expenditure.

What was the biggest challenge with this project?

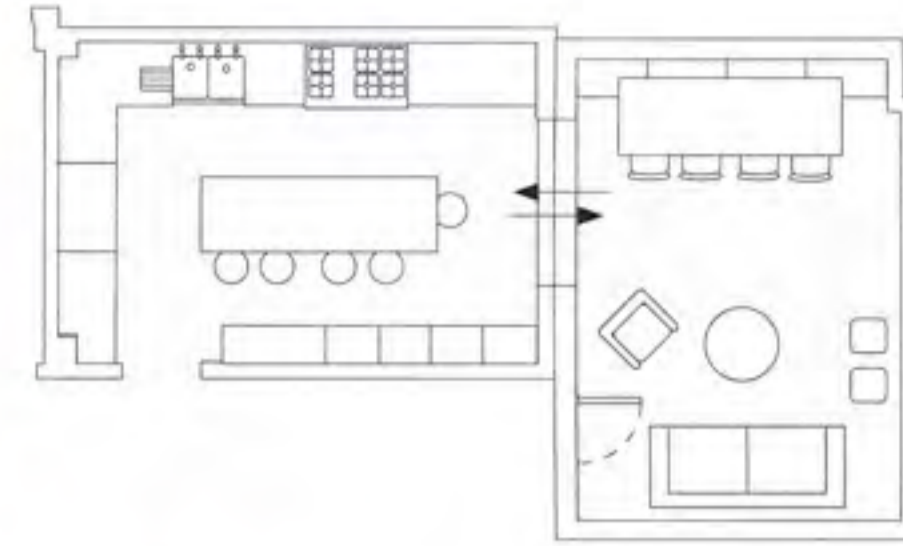
It's not easy to close a central London street and crane the huge fridge, range cooker and granite worktops over the neighbour's garden to bring them in through the rear of the house.

Any tips for people embarking on a similar project?

Don't be afraid to try something different. A bold colour choice, an unusual finish, an eclectic choice of light – if you love it, go for it! Creativity can pay off and set your home apart.

What advice do you give clients on finding contractors?

Follow up recommendations and use your instinct to find people you can trust.



## SourceBook

## DESIGN

**Interior design** Caz Myers of Caz Myers Design (020 8348 6464 or cazmyers.com)

## KITCHEN

**Cabinetry** Bespoke Spitalfields furniture, painted in Draught Passage, with Osea island, painted in Railings by Farrow & Ball (farrow-ball.com), all Plain English (020 7486 2674 or plainenglishdesign.co.uk)

**Worktops and sink** Antique Sawn Belgian Blue Fossil stone, Plain English, as before

**Splashback and flooring** Dinesen oak, Roger Hyde Flooring (01787 463348 or rogerhyde.co.uk)

**Appliances** Range cooker, Pro cooker hood and splashback, fridge-freezer, all Sub-Zero Wolf (0845 250 0010 or subzero-wolf.co.uk); CoolDrawer, Fisher & Paykel (0800 088 6605 or fisherpaykel.com); Fully integrated dishwasher, Miele (0330 160 6600 or miele.co.uk)

**Tap** Steam Valve Original 1013 deck-mounted bridge mixer with articulated spout, Hornbeam Ivy (01373 461693 or hornbeamivy.co.uk)

**Under-shelf lights** For similar, try Urban Cottage Industries (020 7193 2119 or urbancottageindustries.com)

**Pendant lights** Projecteur 365 Sospensione, Twentytwentyone (020 7837 1900 or twentytwentyone.com)

**Barstools** Vintage Toledo, Restoration Hardware (+1 8007621005 or restorationhardware.com)

## DINING-LIVING ROOM

**Dining table** Zinc-topped table, Andrew Nebbett Designs (020 7723 2303 or andrewnebbettdesigns.co.uk)

**Dining chairs** For similar try Amode (020 3397 7323 or amode.co.uk)

**Banquette** Bespoke, Caz Myers Design, as before

**Pendant lights** (Above dining table) For similar, try Trainspotters (01453 756677 or trainspotters.co.uk)

**Stair steel strips** Polished Gun Barrel finish, Andrew Nebbett Designs, as before

**Sofa** Bespoke, Caz Myers Design, as before, upholstered in Stonewashed Dune Antelope linen, De Le Cuona (020 7584 7677 or delecuona.com)

**Cushions** Linear 008 Papaia fabric, Dedar (020 7351 9939 or dedar.com) and Chamonix Sunset DE11811 wool, Holland & Sherry (020 7352 7768 or hollandandsherry.com)

**Footstools** Bespoke Caz Myers Design, as before, upholstered in Chamonix Sunset DE11811 wool, Holland & Sherry, as before

**Coffee table** Coffee Bean, Themes & Variations (020 7727 5531 or themesandvariations.com)

**Side tables** For similar, try Restoration Hardware, as before

**Wall lights** Fulton, Ralph Lauren Home (020 7590 7990 or ralphlaurenhome.com)

**Brick wall** Reclaimed Tudor Brick tiles, Reclaimed Brick-Tile (01925 606700 or reclaimedbrick-tile.com)

## COST

A similar kitchen, dining and living room would cost about £100,000.

